

# THE COLLECTORS

## Image Credit List for 'The Collectors'

The Danish & Nordic Pavilions 2009  
53<sup>rd</sup> International Art Exhibition - la Biennale di Venezia

Photo credits for all images, unless otherwise stated:

Installation shot from 'The Collectors'  
The Danish & Nordic Pavilions, 2009  
53<sup>rd</sup> International Art Exhibition - La Biennale di Venezia  
Photographer: Anders Sune Berg

Additional image material on all artists and the exhibition is available at: [www.danish-nordic-pavilions.com](http://www.danish-nordic-pavilions.com)

Copyright of images, unless otherwise stated: The Danish & Nordic Pavilions and the artists, 2009

Artworks are listed following the order from left to right in the picture

### The Nordic Pavilion



**Vibeke Slyngstad**  
*The Nordic Pavilion I*, 2009  
Oil on canvas  
182 x 260 cm  
Courtesy of Galleri MGM, Oslo

*The Nordic Pavilion II*, 2009  
Oil on canvas  
182 x 260 cm  
Courtesy of Galleri MGM, Oslo

**Elmgreen & Dragset**  
*Marriage*, 2004  
2 Mirrors, 2 porcelain sinks, taps,  
stainless steel tubing, soap  
178 x 168 x 81 cm  
Courtesy of VERDEC Collection,  
Belgium, and Galleri Nicolai  
Wallner, Copenhagen

**Wolfgang Tillmans**  
*FKK / naturists*, 2008  
C-print mounted on forex in  
artist's frame  
181 x 269 x 6 cm  
Courtesy of Galerie Daniel  
Buchholz, Cologne / Berlin;  
Maureen Paley, London;  
Andrea Rosen Gallery, New  
York



**Henrik Olesen**  
*Cubes (after Sol LeWitt)*,  
1998 / 2008  
Polystyrene, milk carton,  
adhesive tape, composite  
packaging  
Cubes 100 x 100 x 100 cm  
Courtesy of Galerie Daniel  
Buchholz, Cologne / Berlin

**Simon Fujiwara**  
*Desk Job*, 2009  
Desk, photos, documents,  
text  
Dimensions variable  
Courtesy of the artist

**Vibeke Slyngstad**  
*The Nordic Pavilion I*, 2009  
Oil on canvas  
182 x 260 cm  
Courtesy of Galleri MGM,  
Oslo

*The Nordic Pavilion II*,  
2009  
Oil on canvas  
182 x 260 cm  
Courtesy of Galleri MGM,  
Oslo

**Terence Koh**  
*David, David It's a Long  
Cold Winter Let's Rest  
Forever till We Fall  
Asleep*, 2007  
Cracked plaster, glue,  
acrylic, powder, plinths  
170 x 28 x 28 cm  
Courtesy of Peres Projects,  
Berlin Los Angeles

# THE COLLECTORS



**Simon Fujiwara**  
*Desk Job*, 2009  
 Desk, photos, documents,  
 text  
 Dimensions variable  
 Courtesy of the artist

**Vibeke Slyngstad**  
*The Nordic Pavilion I*, 2009  
 Oil on canvas  
 182 x 260 cm  
 Courtesy of Galleri MGM, Oslo

*The Nordic Pavilion II*, 2009  
 Oil on canvas  
 182 x 260 cm  
 Courtesy of Galleri MGM, Oslo

**Terence Koh**  
*David, David It's a Long Cold*  
*Winter Let's Rest Forever till We*  
*Fall Asleep*, 2007  
 Cracked plaster, glue, acrylic,  
 powder, plinths  
 170 x 28 x 28 cm  
 Courtesy of Peres Projects, Berlin  
 Los Angeles



**Nina Saunders**  
*Payload*, 2009  
 Mixed media  
 105 x 205 x 108 cm  
 Courtesy of Andréhn-  
 Schiptjenko, Stockholm

**Guillaume Bijl**  
*Sorry*, 1987  
 Mixed Media  
 8 x 15 x 15 cm  
 Courtesy of Private Collection,  
 Gent

**Norway Says**  
*Cyclos*, 2006  
 Floor lamp, aluminum,  
 plastic  
 Ø 60 cm, 143 cm  
 Produced by Lucente  
 Courtesy of the designers

**Hernan Bas**  
*The act of pollination*, 2009  
 Acrylic on linen over panel  
 127 x 101.6 cm  
 Courtesy of Victoria Miro  
 Gallery, London

*Same Same*, 2007  
 Tinted glass  
 Carafes: Ø 9 cm, 38 cm  
 Produced by Muuto  
 Courtesy of the designers



**Jonathan Monk**  
*Maquette for a Giant*  
*Spinning O*, 2006  
 Aluminum  
 Ø 194 cm  
 Courtesy of Galleri Nicolai  
 Wallner, Copenhagen

**Norway Says**  
*Cyclos*, 2006  
 Floor lamp, aluminum,  
 plastic  
 Ø 60 cm, 143 cm  
 Produced by Lucente  
 Courtesy of the designers

**Nina Saunders**  
*Payload*, 2009  
 Mixed media  
 105 x 205 x 108 cm  
 Courtesy of Andréhn-  
 Schiptjenko, Stockholm



**Wolfgang Tillmans**  
*FKK / naturists*, 2008  
 C-print mounted on forex in artist's frame  
 181 x 269 x 6 cm  
 Courtesy of Galerie Daniel Buchholz, Cologne / Berlin;  
 Maureen Paley, London; Andrea Rosen Gallery, New York

*Polynesian sculptures*  
 Courtesy Francesca von Habsburg



**Pepe Espaliú**  
*Carrying VI*, 1992  
 Iron  
 143 x 200 x 107 cm  
 Courtesy of Pepe Cobo y cía,  
 Madrid, and Colección Helga  
 de Alvear, Madrid

**Han & Him**  
*Butterflies*, 2009  
 Steel frame, glass, fabric  
 180 x 150 x 6 cm  
 Courtesy of the artists

**Elmgreen & Dragset**  
*Marriage*, 2004  
 2 Mirrors, 2 porcelain sinks, taps,  
 stainless steel tubing, soap  
 178 x 168 x 81 cm  
 Courtesy of VERDEC Collection,  
 Belgium, and Galleri Nicolai  
 Wallner, Copenhagen



'The Hockney  
 Bathroom'

**Elmgreen & Dragset**  
*Marriage*, 2004  
 2 Mirrors, 2 porcelain sinks, taps,  
 stainless steel tubing, soap  
 178 x 168 x 81 cm  
 Courtesy of VERDEC Collection,  
 Belgium, and Galleri Nicolai Wallner,  
 Copenhagen

# THE COLLECTORS



**Hernan Bas**  
*The act of pollination*,  
2009  
Acrylic on linen over  
panel  
127 x 101.6 cm  
Courtesy of Victoria  
Miro Gallery, London

**Vibeke Slyngstad**  
*The Nordic Pavilion I*,  
2009  
Oil on canvas  
182 x 260 cm  
Courtesy of Galleri  
MGM, Oslo

**Terence Koh**  
*David, David It's a Long  
Cold Winter Let's Rest  
Forever till We Fall  
Asleep*, 2007  
Cracked plaster, glue,  
acrylic, powder, plinths  
170 x 28 x 28 cm  
Courtesy of Peres Projects,  
Berlin Los Angeles

**Pepe Espaliú**  
*Carrying VI*, 1992  
Iron  
143 x 200 x 107 cm  
Courtesy of Pepe  
Cobo y cia, Madrid,  
and Colección Helga  
de Alvear, Madrid

**Han & Him**  
*Butterflies*, 2009  
Steel frame, glass,  
fabric  
180 x 150 x 6 cm  
Courtesy of the artists



**Vibeke Slyngstad**  
*The Nordic Pavilion I*,  
2009  
Oil on canvas  
182 x 260 cm  
Courtesy of Galleri  
MGM, Oslo

**Terence Koh**  
*David, David It's a Long  
Cold Winter Let's Rest  
Forever till We Fall  
Asleep*, 2007  
Cracked plaster, glue,  
acrylic, powder, plinths  
170 x 28 x 28 cm  
Courtesy of Peres  
Projects, Berlin Los  
Angeles

**Pepe Espaliú**  
*Carrying VI*, 1992  
Iron  
143 x 200 x 107 cm  
Courtesy of Pepe  
Cobo y cia, Madrid,  
and Colección Helga  
de Alvear, Madrid



**William E. Jones**  
Compilation Including *150 Films, All  
Male Mash Up* and *The Fall of  
Communism as Seen in Gay Pornography*,  
2009  
Video, color, sound  
60 min.  
Courtesy of David Kordansky Gallery, Los  
Angeles

**Terence Koh**  
*David, David It's a Long Cold Winter  
Let's Rest Forever till We Fall Asleep*,  
2007  
Cracked plaster, glue, acrylic, powder,  
plinths  
170 x 28 x 28 cm  
Courtesy of Peres Projects,  
Berlin Los Angeles



**Tom of Finland**  
Installation in vitrine  
**ALL TOM OF FINLAND  
WORKS:**  
**COPYRIGHT TOM OF  
FINLAND FOUNDATION**  
[www.tomoffinlandfoundation.org](http://www.tomoffinlandfoundation.org)

**William E. Jones**  
Compilation Including *150  
Films, All Male Mash Up* and  
*The Fall of Communism as Seen  
in Gay Pornography*, 2009  
Video, color, sound  
60 min.  
Courtesy of David Kordansky  
Gallery, Los Angeles

**Terence Koh**  
*David, David It's a Long Cold  
Winter  
Let's Rest Forever till We Fall  
Asleep*, 2007  
Cracked plaster, glue, acrylic,  
powder, plinths  
170 x 28 x 28 cm  
Courtesy of Peres Projects,  
Berlin Los Angeles

**Pepe Espaliú**  
*Carrying VI*, 1992  
Iron  
143 x 200 x 107 cm  
Courtesy of Pepe  
Cobo y cia, Madrid  
and Colección Helga  
de Alvear, Madrid



**Tom of Finland**  
*Untitled*, 1979  
Pencil on paper, framed  
40 x 29.8 cm  
Courtesy of the Collection of  
Daniel Buchholz and  
Christopher Müller, Cologne

*Tearoom Odyssey*, c. 1968  
Graphite on paper  
29.5 x 21.3 cm  
Courtesy of the Permanent  
Collection, Tom of Finland  
Foundation, Los Angeles

*Black Magic*, 1984,  
Graphite on paper  
33 x 24.1 cm  
Courtesy of the Permanent  
Collection, Tom of  
Finland Foundation, Los  
Angeles

*No Swimming*, from the  
AMG Series, 1965  
Graphite on paper  
30.8 x 22.2 cm  
Courtesy of Bob Mizer  
Collection - AMG and the  
Permanent  
Collection, Tom of

*The Loggers*, from the  
AMG Series, 1974  
Graphite on paper  
29.8 x 21 cm  
Courtesy of Bob Mizer  
Collection - AMG and the  
Permanent Collection, Tom  
of Finland Foundation,  
Los Angeles

*David, a Beauty*, 1989  
Graphite on paper  
36.8 x 26.7 cm  
Courtesy of Rodriguez  
Collection and the  
Permanent Collection, Tom

*Tom's David*, 1981  
Graphite on Paper  
98.4 x 42.2 cm  
Courtesy of the  
Permanent Collection, Tom of  
Finland Foundation, Los Angeles

**ALL TOM OF FINLAND  
WORKS:**

**COPYRIGHT TOM OF  
FINLAND FOUNDATION**

[www.tomoffinlandfoundation.org](http://www.tomoffinlandfoundation.org)

# THE COLLECTORS

Finland Foundation, Los Angeles

of Finland Foundation, Los Angeles



**Han & Him**  
*Butterflies*, 2009  
 Steel frame, glass, fabric  
 180 x 150 x 6 cm  
 Courtesy of the artists

**Elmgreen & Dragset**  
*Marriage*, 2004  
 2 Mirrors, 2 porcelain sinks, taps, stainless steel tubing, soap  
 178 x 168 x 81 cm  
 Courtesy of VERDEC Collection, Belgium, and Galleri Nicolai Wallner, Copenhagen



**Norway Says**  
*Cyclos*, 2006  
 Floor lamp, aluminum, plastic  
 Ø 60 cm, 143 cm  
 Produced by Lucente  
 Courtesy of the designers

**Nina Saunders**  
*Payload*, 2009  
 Mixed media  
 105 x 205 x 108 cm  
 Courtesy of Andréhn-Schiptjenko, Stockholm



**Vibeke Slyngstad**  
*The Nordic Pavilion I*, 2009  
 Oil on canvas  
 182 x 260 cm  
 Courtesy of Galleri MGM, Oslo  
  
*The Nordic Pavilion II*, 2009  
 Oil on canvas  
 182 x 260 cm  
 Courtesy of Galleri MGM, Oslo

**Terence Koh**  
*David, David It's a Long Cold Winter*  
*Let's Rest Forever till We Fall Asleep*, 2007  
 Cracked plaster, glue, acrylic, powder, plinths  
 170 x 28 x 28 cm  
 Courtesy of Peres Projects, Berlin Los Angeles

**Pepe Espaliú**  
*Carrying VI*, 1992  
 Iron  
 143 x 200 x 107 cm  
 Courtesy of Pepe Cobo y cía, Madrid, and Colección Helga de Alvear, Madrid



**Vibeke Slyngstad**  
*The Nordic Pavilion I*, 2009  
 Oil on canvas  
 182 x 260 cm  
 Courtesy of Galleri MGM, Oslo

**Terence Koh**  
*David, David It's a Long Cold Winter*  
*Let's Rest Forever till We Fall Asleep*, 2007  
 Cracked plaster, glue, acrylic, powder, plinths  
 170 x 28 x 28 cm  
 Courtesy of Peres Projects, Berlin Los Angeles

**Han & Him**  
*Butterflies*, 2009  
 Steel frame, glass, fabric  
 180 x 150 x 6 cm  
 Courtesy of the artists

**Hernan Bas**  
*Opening night of a Russian futurist play based on the life of Gauguin (or, Under the Tahitian Moon)*, 2009  
 Acrylic on linen over panel  
 101.6 x 76.2 cm  
 Courtesy of Victoria Miro Gallery, London



Installation view – The Nordic Pavilion

# THE COLLECTORS



**Wolfgang Tillmans**  
*FKK / naturists*, 2008  
 C-print mounted on forex in artist's frame  
 181 x 269 x 6 cm  
 Courtesy of Galerie Daniel Buchholz, Cologne / Berlin; Maureen Paley, London; Andrea Rosen Gallery, New York

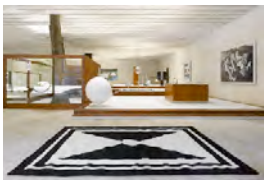
**Nico Muhly**  
*Radio Music*, 2009  
 Composed by Nico Muhly  
 Copyright 2009 St. Rose Music Publishing Inc. New York  
 Courtesy of the composer

**Nina Saunders**  
*Payload*, 2009  
 Mixed media  
 105 x 205 x 108 cm  
 Courtesy of Andréhn-Schiptjenko, Stockholm

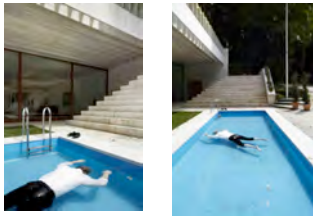
**Henrik Olesen**  
*Cubes (after Sol LeWitt)*, 1998 / 2008  
 Polystyrene, milk carton, adhesive tape, composite packaging  
 Cubes 100 x 100 x 100 cm  
 Courtesy of Galerie Daniel Buchholz, Cologne / Berlin



Exterior view of *Mr. B's* home, the Nordic Pavilion



Interior view of *Mr. B's* home, the Nordic Pavilion



**Elmgreen & Dragset**  
*Death of a Collector*, 2009  
 Mixed media  
 100 x 600 x 200 cm  
 Courtesy of Galería Helga de Alvear, Madrid

## The Danish Pavilion



Exterior view of *A. Family's* home, the Danish Pavilion

For Sales Sign designed by Elmgreen & Dragset and Jani Leinonen



**Martin Jacobson**  
*Painter I & II*, 2008  
 Ink washed drawings on paper  
 102 x 73 cm (each)  
 Courtesy of Andréhn-Schiptjenko, Stockholm

*Urn I & II*, 2008  
 Porcelain vases  
 40 x 10 x 7 cm (each)  
 Courtesy Andréhn-Schiptjenko, Stockholm

**Norway Says**  
*Duo*, 2008  
 2 Sofas  
 Wool, wood  
 180 (170) x 90 (85) x 75 cm (135 cm folded up)  
 Designed by Norway Says & Hallgeir Homstvedt  
 Produced by L. K. Hjelle  
 Courtesy of the designers

**Elmgreen & Dragset**  
 Interior Design / Staircase, 2009  
 Courtesy of the artists

# THE COLLECTORS



**Jani Leinonen**  
*Anything Helps*,  
2005-2009  
Begging signs, frames  
Dimensions variable  
Courtesy of the artist

**Elmgreen & Dragset**  
*Table for Bergman*, 2009  
Wood, paint, perspex,  
chairs, glassware, cutlery,  
hand painted porcelain  
90 x 605 x 230 cm  
Courtesy of the artists

**Elmgreen & Dragset**  
*Rosa*, 2006  
Gilded brass, steel, fiber glass  
with epoxy, garments, shoes  
153 x 46 x 44 cm  
Courtesy of Collection Glenn  
Fuhrman, New York / The  
FLAG Art Foundation, New  
York

**Nina Saunders**  
*Delicate Landscape*, 2009  
Mixed media  
77 x 120 x 118 cm  
Courtesy Andréhn-  
Schiptjenko, Stockholm



**Nina Saunders**  
*Delicate Landscape*, 2009  
Mixed media  
77 x 120 x 118 cm  
Courtesy of Andréhn-  
Schiptjenko, Stockholm

**Elmgreen & Dragset**  
*Table for Bergman*, 2009  
Wood, paint, perspex, chairs,  
glassware, cutlery, hand  
painted porcelain  
90 x 605 x 230 cm  
Courtesy of the artists

**Sturtevant**  
*Stella Die Fahne hoch!*, 1990  
Black enamel on canvas  
320 x 203 cm  
Courtesy of Galerie Thaddaeus Ropac, Paris /  
Salzburg

*Stella Arbeit Macht Frei*, 1989  
Black enamel on canvas  
214 x 314 cm  
Courtesy of Galerie Thaddaeus Ropac, Paris /  
Salzburg



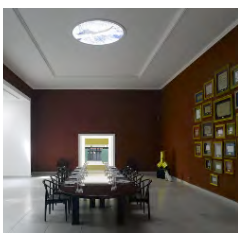
**Sturtevant**  
*Stella Arbeit Macht  
Frei*, 1989  
Black enamel on  
canvas  
214 x 314 cm  
Courtesy of Galerie  
Thaddaeus Ropac,  
Paris / Salzburg

**Elmgreen & Dragset**  
*Table for Bergman*, 2009  
Wood, paint, perspex,  
chairs, glassware, cutlery,  
hand painted porcelain  
90 x 605 x 230 cm  
Courtesy of the artists

**Elmgreen & Dragset**  
*Torso of a (forever) young  
man*, 2008  
Wood, steel, fiberglass,  
high gloss varnish, mp3  
player, loudspeaker, voice  
of James Franco  
133 x 62 x 45 cm  
Courtesy of Victoria Miro  
Gallery, London

**Maurizio  
Cattelan**  
*Untitled*, 2009  
Taxidermy  
Life size  
Courtesy of  
Massimo De Carlo  
Gallery, Milan

**Jani Leinonen**  
*Anything Helps*,  
2005-2009  
Begging signs, frames  
Dimensions variable  
Courtesy of the artist

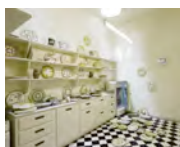


**Elmgreen & Dragset**  
*Table for Bergman*, 2009  
Wood, paint, perspex,  
chairs, glassware, cutlery,  
hand painted porcelain  
90 x 605 x 230 cm  
Courtesy of the artists

**Elmgreen & Dragset**  
*Torso of a (forever) young man*,  
2008  
Wood, steel, fiberglass, high gloss  
varnish, mp3 player, loudspeaker,  
voice of James Franco  
133 x 62 x 45 cm  
Courtesy of Victoria Miro  
Gallery, London

**Maurizio Cattelan**  
*Untitled*, 2009  
Taxidermy  
Life size  
Courtesy of Massimo De  
Carlo Gallery, Milan

**Jani Leinonen**  
*Anything Helps*, 2005-  
2009  
Begging signs, frames  
Dimensions variable  
Courtesy of the artist

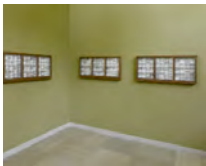


*Porcelain collection*  
Courtesy Massimo De Carlo

# THE COLLECTORS

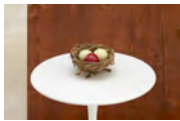


**Klara Lidén**  
*Teenage Room, 2009*  
Mixed media installation  
270 x 435 x 430 cm  
Courtesy of Reena Spaulings Fine Art,  
New York

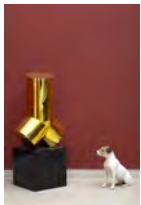


*Fly collection*  
Courtesy Fredrik Sjöberg

## Close Ups



**Guillaume Bijl**  
*Sorry, 1987*  
Mixed Media  
8 x 15 x 15 cm  
Courtesy of Private Collection, Gent



**Elmgreen & Dragset**  
*Torso of a (Forever) Young Man, 2008*  
Wood, steel, fiberglass, high gloss varnish,  
mp3 player, loudspeaker, voice of  
James Franco  
133 x 62 x 45 cm  
Courtesy of Victoria Miro Gallery, London

**Maurizio Cattelan**  
*Untitled, 2009*  
Taxidermy  
Life size  
Courtesy of Massimo De Carlo Gallery, Milan



**Han & Him**  
*Butterflies, 2009*  
Steel frame, glass, fabric  
180 x 150 x 6 cm  
Courtesy of the artists



**Pepe Espaliú**  
*Carrying VI, 1992*  
Iron  
143 x 200 x 107 cm  
Courtesy of Pepe Cobo y cía, Madrid, and  
Colección Helga de Alvear, Madrid



*Polynesian sculptures*  
Courtesy Francesca von Habsburg

# THE COLLECTORS



**Sturtevant**

*Stella Die Fahne hoch!*, 1990  
Black enamel on canvas  
320 x 203 cm  
Courtesy of Galerie Thaddaeus Ropac,  
Paris / Salzburg

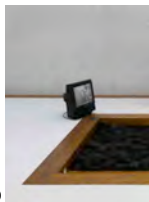
*Stella Arbeit Macht Frei*, 1989  
Black enamel on canvas  
214 x 314 cm  
Courtesy of Galerie Thaddaeus Ropac,  
Paris / Salzburg



**Wolfgang Tillmans**

*FKK/naturists*, 2008  
C-print mounted on forex in artist's frame  
181 x 269 x 6 cm  
Courtesy of Galerie Daniel Buchholz,  
Cologne / Berlin; Maureen Paley,  
London; Andrea Rosen Gallery, New York

*Please notice that the image credit for the above is: the artist*



**William E. Jones**

Compilation Including *150 Films*, *All Male Mash Up*  
and *The Fall of Communism as Seen in Gay*  
*Pornography*, 2009  
Video, color, sound  
60 min.  
Courtesy of David Kordansky Gallery, Los Angeles

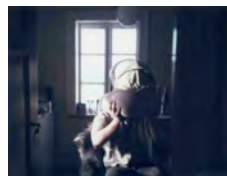
*Please notice that the image credit for the above is: the artist*



**Jani Leinonen**

*Anything Helps*, 2005-2009  
Begging signs, frames  
Dimensions variable  
Courtesy of the artist

*Please notice that the image credit for the above is: the artist*



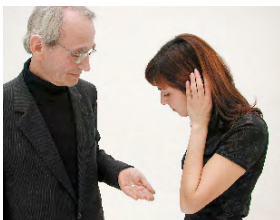
**Thora Dolven Balke**

*Safety Measures*, 2009  
Polaroid photos, photo album  
Dimensions variable, photos 10.5 x 6.5 cm  
Courtesy of the artist

*Please notice that the image credit for the above is: the artist*



# THE COLLECTORS



**Massimo Bartolini**

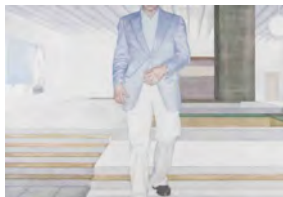
*Double shell*, 2001

Pearl, guard

Ø 0.9 cm

Courtesy of Museum für Moderne Kunst, Frankfurt; purchased with the generous support of the 3x8 Fonds, an initiative by 12 Frankfurt based companies and the City of Frankfurt

Please notice that the image credit for the above is: Photographer A. Schneider



**Vibeke Slyngstad**

*The Nordic Pavilion I*, 2009

Oil on canvas

182 x 260 cm

Courtesy of Galleri MGM, Oslo

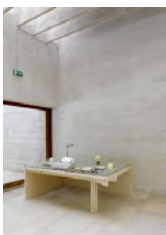
*The Nordic Pavilion II*, 2009

Oil on canvas

182 x 260 cm

Courtesy of Galleri MGM, Oslo

Please notice that the image credit for the above is: Photographer Øystein Thorvaldsen



**Simon Fujiwara**

*Desk Job*, 2009

Desk, photos, documents, text

Dimensions variable

Courtesy of the artist



**Hernan Bas**

*The act of pollination*, 2009

Acrylic on linen over panel

127 x 101.6 cm

Courtesy of Victoria Miro Gallery, London

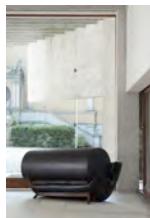
*Opening night of a Russian futurist play based on the life of Gauguin*

*(or, Under the Tahitian Moon)*, 2009

Acrylic on linen over panel

101.6 x 76.2 cm

Courtesy of Victoria Miro Gallery, London



**Nina Saunders**

*Delicate Landscape*, 2009

Mixed media

77 x 120 x 118 cm

Courtesy of Andréhn-Schiptjenko, Stockholm

**Nina Saunders**

*Payload*, 2009

Mixed media

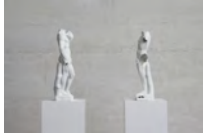
105 x 205 x 108 cm

Courtesy of Andréhn-Schiptjenko, Stockholm



The Danish Pavilion, Skylight

# THE COLLECTORS



**Terence Koh**

*David, David It's a Long Cold Winter  
Let's Rest Forever till We Fall Asleep, 2007*  
Cracked plaster, glue, acrylic, powder, plinths  
170 x 28 x 28 cm  
Courtesy of Peres Projects,  
Berlin Los Angeles



**Elmgreen & Dragset**

*Broken Door, 2009*  
Mixed media  
23 x 105 x 7 cm  
Courtesy of the artists



**Elmgreen & Dragset**

*Rosa, 2006*  
Gilded brass, steel, fiber glass with epoxy,  
garments, shoes  
153 x 46 x 44 cm  
Courtesy of Collection Glenn Fuhrman,  
New York / The FLAG Art Foundation, New York



**Martin Jacobson**

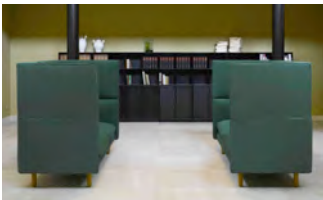
*Exhibition, 2008*  
Ink washed drawing on paper  
102 x 73 cm  
Courtesy of Stefan Ortmark  
Collection, Stockholm

*Urn I & II, 2008*  
Porcelain vases  
40 cm, Ø 25 cm (each)  
Courtesy Andréhn-Schiptjenko,  
Stockholm



**Henrik Olesen**

*Cubes (after Sol LeWitt), 1998 / 2008*  
Polystyrene, milk carton, adhesive tape, composite  
packaging  
Cubes 100 x 100 x 100 cm  
Courtesy of Galerie Daniel Buchholz, Cologne /  
Berlin



**Norway Says**

*Duo, 2008*  
2 Sofas  
Wool, wood  
180 (170) x 90 (85) x 75 cm (135 cm  
folded up)  
Designed by Norway Says & Hallgeir  
Homstvedt  
Produced by L. K. Hjelle  
Courtesy of the designers



**Jonathan Monk**

*Maquette for a Giant Spinning O, 2006*  
Aluminum  
Ø 194 cm  
Courtesy of Galleri Nicolai Wallner,  
Copenhagen

# THE COLLECTORS



**Laura Horelli**

*Haukka-pala / A-Bit-To-Bite*, 2009  
DVD, color, Finnish with English subtitles  
25 min.  
Thanks to YLE / Jarmo Oksa  
Courtesy of Galerie Barbara Weiss, Berlin

*Please notice that the image credit for the above is: the artist*

---



**Portrait of Nico Muhly**  
(Composer)

**Copyright of image: Samantha West**  
Photos may not be edited, cropped, resized, or adjusted in any shape or form without permission from Samantha West.  
If any of the above changes need to be made by any publication, please contact:  
[samantha@samanthawest.net](mailto:samantha@samanthawest.net)

**Nico Muhly's work in the exhibition:**

*Radio Music*, 2009  
Composed by Nico Muhly  
Copyright 2009 St. Rose Music Publishing Inc.  
New York  
Courtesy of the composer

*Please notice that the image credit for the above is: Photographer Samantha West*

---

## All Interiors by Elmgreen & Dragset

---

### Furniture in the Danish Pavilion

*PH Artichoke*, lamp, design by Poul Henningsen, sponsoring in kind from Louis Poulsen

*Montana shelves*, design and sponsoring in kind by Montana from Peter Lassen

*Le Klint folding lamps*, design and sponsoring in kind from Le Klint

*China Chairs*, design by Hans J. Wegner, sponsoring in kind from Republic of Fritz Hansen™

### Furniture in the Nordic Pavilion

*OX Chair*, design by Arne Jacobsen, sponsoring in kind from Erik Jørgensen Møbelfabrik

*Tulip Chairs* and *Dining Table*, design by Eero Saarinen, sponsoring in kind from Knoll International

*PK 80 daybed*, design by Poul Kjærholm, sponsoring in kind from Republic of Fritz Hansen™

*Ball Chair*, design by Eero Aarnio

*Globe lamp & Pantella Lamps*, design by Verner Panton

---



**Portrait of Elmgreen & Dragset**

*Please notice that the image credit for the above is: Photographer: Nick Ash*

---